

GRIDLINE SURVEYS

Solution for Surveying & Computerised Drawing

Sudharshan Homes, F3, Block-1, Plot No. 1, Bhoomadevi Nagar,
Gerugambakkam, Chennai - 600 128. Mob. : 99948 14720, 90920 93494
E-mail : admin@gridlinesurveys.com www.gridlinesurveys.com

Scope Of Services For Topographical/contour survey

1.1. Mapping The Surface Undulations :

1.2.1 Accurate spot levels 10m Interval of natural ground can be taken by Total Station, highly sophisticated Survey Equipment, if the site is covered with bushes and shrubs.

1.3.2 Contours will be traced at 0.25m intervals.

1.4 Mapping The Boundary, Topography And Contour Information.

1.4.1 The boundary markers shall be marked as boundary markers and identify in the survey report.

1.4.2 The boundary markers will be placed at all corners as require else where.

1.4.3 Planimetric Dimension of Major Topographic Features :-

Any paved, WBM and mud roads, cart tracks, railways, location of revenue stones water bodies(past and present), wells, ponds, streams, canals, ditches, underground storage, electrical and telephone distribution network, including the location of poles/pylons, foot print of structures, tanks, culvert, pipelines, bridges, compound wall, fences, indicated location of major trees and their girth greater than 0.5m, shadow, species, dense bushes, shrubs, rock out cropping and other natural features taken by the Electronic Digital Total Station, a highly sophisticated Survey Equipment.

1.4.4. Details from FMBs will have Digitization, Mosaiquing and Superimposed with Engineering Survey drawings.

1.4.5 The entire mapping exercise shall be carried out with high precision the Leica Electronic Digital Total Station, a highly sophisticated Survey Equipment.

With an angular accuracy of 5" fitted with on-line data recording facility.

1.5 Preparation And Submission Of The Survey Drawings :

Scale :

1.5.1 Soft Copy :

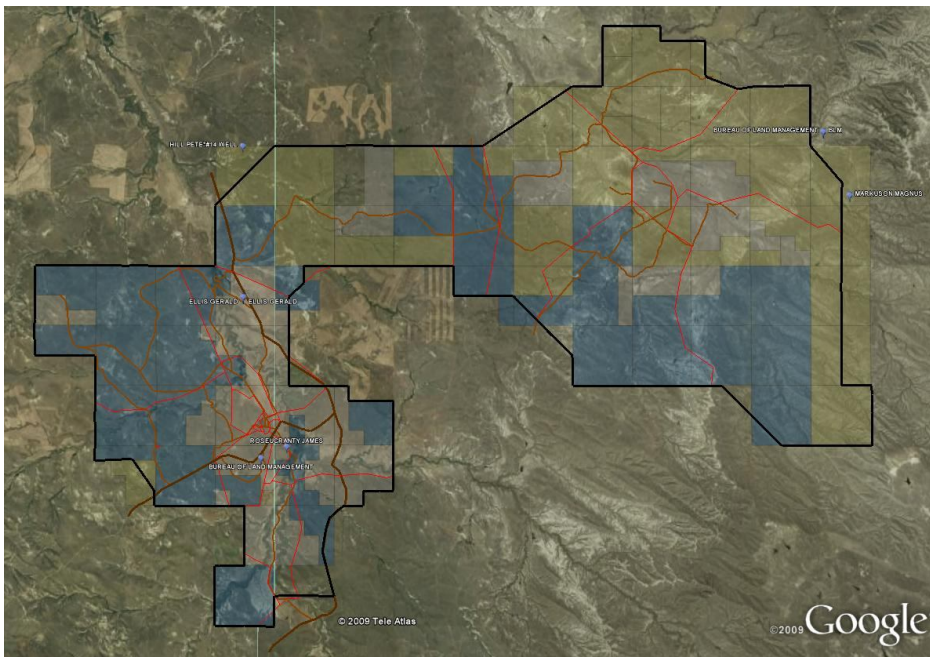
Cad Drawing Plan - 1 : 1000

1.5.4 Drawings showing the boundary dimension, location of boundary measurements, location of topographical features. Subtended angles at the boundary vertices, foot prints of existing structure and the contour lines, with the contour lines having been drawn to a vertical interval 0.25m.

1.6 Special Service :-

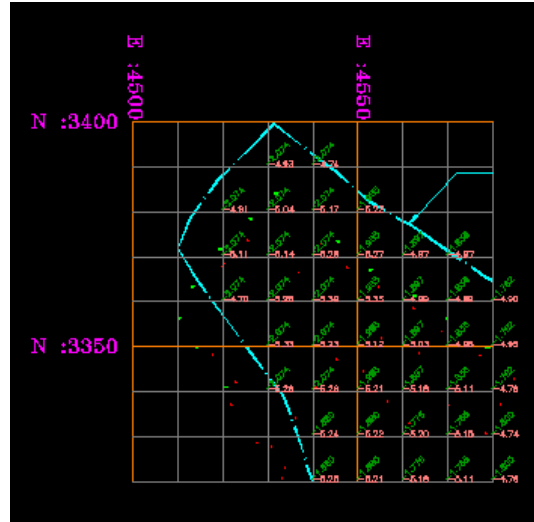
1.6.1 Your Site Location and Boundary marking Google Earth Kml File>>>> Free of cost

Example:



1.6.2 Using Special Software If you need based on road level site filling/cutting volume calculation >>>> Free of cost

MODEL DRAWING



VERTICAL SECTION OF DRAWING

Filling: 74.420
Datum: 191.0

Cutting	
Filling	
Formation	
Ground	
Distance	

100116

MODEL OF VALUME CALCULATION

Sl. No.	Chainage From	Previous Chainage	Difference	Width	Cutting Volume				Filling Volume			
					Area	Previous	Average	Volume	Area	Previous	Average	Volume
					Sq. Meters	Area	Sq. Meters	Cubic Meters	Sq. Meters	Area	Sq. Meters	Cubic Meters
1	100098.000	-	0.000	2.467	0.000	0.000	0.000	0.000	3.108	0.000	1.554	0.000
2	100100.000	100098.000	2.000	12.875	0.000	0.000	0.000	0.000	30.092	3.108	16.600	33.200
3	100102.000	100100.000	2.000	17.242	0.000	0.000	0.000	0.000	37.830	30.092	33.961	67.922
4	100104.000	100102.000	2.000	19.639	0.000	0.000	0.000	0.000	37.457	37.830	37.644	75.287
5	100106.000	100104.000	2.000	22.035	0.000	0.000	0.000	0.000	37.297	37.457	37.377	74.754
6	100108.000	100106.000	2.000	24.432	0.000	0.000	0.000	0.000	37.395	37.297	37.346	74.692
7	100110.000	100108.000	2.000	24.638	0.000	0.000	0.000	0.000	39.046	37.395	38.221	76.441
8	100112.000	100110.000	2.000	27.218	0.000	0.000	0.000	0.000	50.414	39.046	44.730	89.459
9	100114.000	100112.000	2.000	29.797	0.000	0.000	0.000	0.000	61.830	50.414	56.122	112.243
10	100116.000	100114.000	2.000	32.377	0.000	0.000	0.000	0.000	74.420	61.830	68.125	136.250
11	100118.000	100116.000	2.000	36.228	0.000	0.000	0.000	0.000	89.617	74.420	82.019	164.037
12	100120.000	100118.000	2.000	37.993	0.000	0.000	0.000	0.000	102.421	89.617	96.019	192.038
13	100122.000	100120.000	2.000	40.522	0.000	0.000	0.000	0.000	113.434	102.421	107.928	215.855
Total								0.000				32445.223